



# NorthSeas

## GUARD E/N

### E-mail Archiving Appliance



**Three Models -  
One Exciting  
Feature Set**

**GUARD E/N**  
(1-500 Users)

**GUARD E/N PRO**  
(500-1000 Users)

**GUARD E/N ENTERPRISE**  
(1001-2500 Users)

#### New Features:

**iSCSI storage** - An IP SAN becomes a highly scalable message store

**Stand-in Mail Services**® - Message access and mail server functionality even if the mail server is unavailable

**LDAP** - Users are authenticated using the same credentials they use on other systems

**Search performance** improvements

**Aliases Supported** - Single search includes alias addresses

**Designated Users** - User can assign archive access to another individual

**User Interface** available in English, French, and Dutch

**NFS storage** - For those who prefer Unix

Innovative E-mail Storage  
for the Small, Medium, and Large  
Organizations

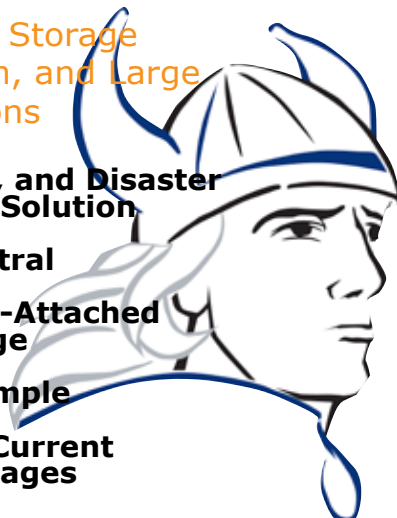
Archiving, Compliance, and Disaster  
Recovery in One Solution

Vendor Neutral

Uses Any Network-Attached  
File Storage

Appliance Simple

Captures Both Current  
and Old Messages



## Archiving

Simplifies mail-server administration by minimizing the need for storage on the server

Provide users with virtually unlimited e-mail storage

Economical e-mail retention - store a user's e-mail for just \$25\* per year

Find messages in the archive usually within seconds

Change your messaging system at any time without losing access to old messages

Single instance storage

Installs in minutes

Minimize your initial investment by archiving to an existing server

\*based on \$5/GB and 5 GB/user/year e-mail data

## Compliance

Automatically captures inbound, outbound and internal messages

Searchable databases - onboard header database and full-text message-body index

Prevents users from modifying or deleting archived messages and attachments

Messages replayed to an inbox retain the original content, format, and time/date

Logging and Reporting of user and system activity

Authorized individuals can search any mail account

## Disaster Recovery

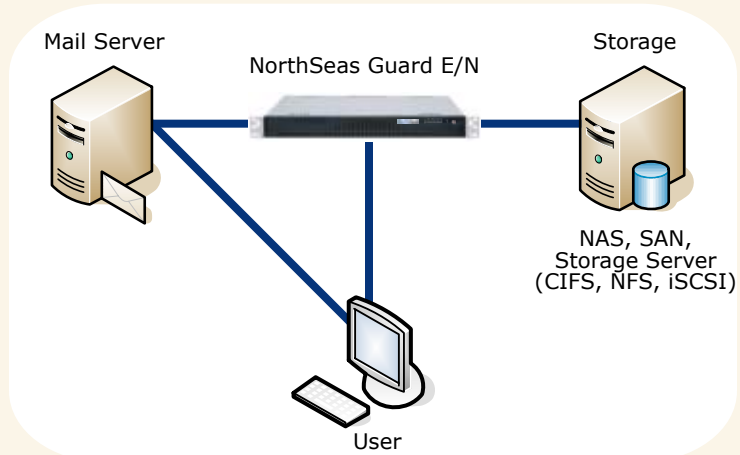
Access archived mail from anywhere using a browser

Reply to messages, Forward messages, Compose new messages, even when mail-server is inaccessible

Messages are stored in vendor neutral RFC822 format and can be replayed through any SMTP-capable server

Archive to a user-accessible offsite (DR) repository as easily as to an onsite (or to both concurrently)

NorthSeas Archive contains both current and older messages



## Search and Replay™

Web application on the Guard E/N accessed using a browser or Outlook folder

Two convenient search options:

**Quick search:** Search by Received or Sent; From; To; Words in the Subject Field; Pre-set Date ranges

**Advanced Search:** Words in the Message Body; Specific Dates and Date Ranges; Message Size; Attachments and Attachment Names (in addition to Quick Search criteria)

Users only have access to their own mail

Users can directly Reply to, or Forward, archived messages without need of a mail server

Compose and send new messages without need of an e-mail client or server

## Capture

Creates a searchable index record of each message as it is captured - retained on the Guard E/N

Archives messages to any file storage system using CIFS, NFS or iSCSI

Retains a searchable full-text index of message-body content on the network share

A replicate of each index record - a Record of Birth (RoB) file - is stored on the network share for back-up and synchronization purposes

The NorthSeas Archive contains both current and older messages

## Spam Protection

**Address Verification** – Confirms that recipients listed on an incoming message are valid before a message is accepted

**Sender Verification** – Confirms that the sender listed on an incoming message is deemed a valid user by the sending domain

**Greylisting** – Temporarily delays acceptance of a message from an unknown domain, generally causing spammers to move on

**Spammer Tarpitting** – Slows processing of incoming e-mail from suspected harvest-attackers

**Automatic Whitelisting** – Whitelists recipients of an outbound message and any user from the responding host

## Administration

**Remote firmware** updates when available

**Threshold Alerts** – Automatically alerts administrators when one of two pre-determined archive storage levels is reached

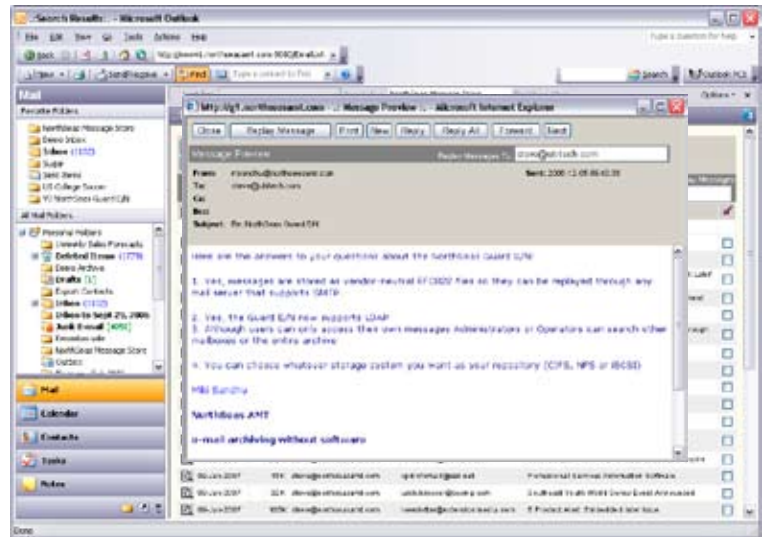
**Prune Archive** – Deletes batches of messages older than a specified date from the archive and from the database

**Move Archived Messages** – Moves messages to external storage but leaves the database record in place

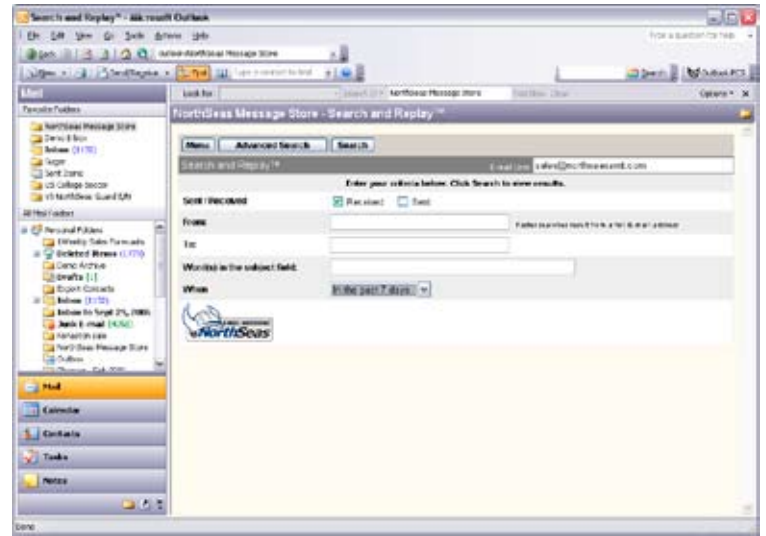
**Index Synchronization** – Synchronizes the databases on separate appliances

**SSL Login** protected

User prevented from modifying and deleting archived messages  
Logging and reporting of user and system activity



View of message in the archive (using Outlook folders)



Quick Search page (using Outlook folder)

	<b>NorthSeas</b> GUARD E/N	<b>NorthSeas</b> GUARD E/N PRO	<b>NorthSeas</b> GUARD E/N ENTERPRISE
<b>Users</b>	<b>1-500</b>	<b>501-1000</b>	<b>1001-2500</b>
<b>Form Factor</b>	19" 1U	19" 1U	19" 1U
<b>Index Capacity</b>	80 million messages	300 million messages	400 million messages

<b>Common Specifications</b>	
Size	H 1.7" (43mm) x W 16.8" (426mm) x D 14" (358mm)
Weight	17 lbs (7.7kg)
Electrical	100 - 240V, 60-50Hz, 4 Amp Max
LAN Connectors	2 x Gigabit RJ45
Certification	FCC/UL/CE/RoHS/CUL/TUV/EN 60950/IEC 60950
Power Supply	Thermal control 260W AC