

NorthSeas

Add e-mail archiving to your product-line TODAY without the need for third-party software or product development

nSEAC

NorthSeas E-mail Archiving Card

For OEMs and System Builders

Uses standard network storage to provide a highly scalable and economical message repository

Gives users unlimited message storage while minimizing mail-server storage

Users can easily search, list, view, and replay any archived message

Captures inbound, outbound and internal messages

Works in most popular messaging environments

No client-side code or plug-ins needed

View messages while still in the archive

Users can even reply to and forward messages without relying on a mail server (serves as short-term back up e-mail service)

Other Available NorthSeas OEM Products:

nFLASH - NorthSeas application on a DOM or Flash

NSARCHIVE - Master licensing option

E-mail Archiving on a Self-Contained PCI CPU Card



Pre-loaded NorthSeas archiving application

Operates as a system within a system

No software or O/S compatibility to worry about

Instant E-mail Archiving

NorthSeas e-mail archiving technology designed for appliance-based solutions can now turn your server, appliance, or storage system into an e-mail archiving system. Years of extensive product development are now instantly deployable in your systems.

nSEAC, a PCI CPU card with pre-loaded NorthSeas software, operates as a self-contained e-mail solution within another system chassis. The NorthSeas application automatically captures e-mail messages and stores them in a standard network storage system. Using the NorthSeas Search and Replay™ web-based application, users can easily search, list, view, and even "replay" (redeliver) messages back to their inbox.

And with its latest 3.0 firmware release the NorthSeas application now lets users reply to or forward archived messages without the need for access to a mail server. Imagine, your product can now even provide back-up e-mail services when your customer's mail server is nonoperational.

Storage

With NorthSeas' innovative approach to e-mail storage, messages are stored as standard files while retaining a separate index of metadata. Accordingly, any network storage system can serve as an archival message repository. If your product is storage, simply by installing nSEAC you can immediately offer e-mail archiving and integrated storage within your branded chassis.

E-mail Administration

Because users have quick and easy access to all of their messages from the repository, e-mail administrators can freely delete messages from the mail-server, keeping message storage on the server to a minimum. Mail-server performance can be optimized and system back-ups and restores simplified while offering users the e-mail storage capacity they are increasingly demanding.

Knowledge Management

A message archive is a convenient accessible and centralized repository of important corporate knowledge. Managers no longer need to scour through hundreds or thousands of mailboxes, back-up tapes, or PST files to find important corporate knowledge contained or attached to e-mail messages.

Compliance

NorthSeas provides the least complicated option for compliance with e-mail retention policies. The NorthSeas model of e-mail archiving is automatic and ensures that a copy of every message is captured in the archive and available when needed within seconds.



nSEAC incorporates an Intel Pentium M processor, DDR2 memory, Serial ATA, and dual Gigabit LAN. The Intel Pentium M processor supports 533MHz front side bus, and 2MB L2 cache.

The board integrates Intel 915GM and ICH6-M chipset, and supports DDR2 400/533 memory, and a built-in high speed serial ATA mass storage interface. One GB of DDR memory is provided.

The board provides one Compact Flash Type II slot and one mini-PCI slot. nSEAC uses the PCI interface of the "host" computer for mounting only. Power is supplied using a standard Molex connector.

Hardware Specifications:

Form Factor	Half-size PCI CPU card
CPU	Intel® Pentium M / Celeron M processors Package type: FC-PGA478 L2 Cache: 512KB/1MB/2MB Front side bus: 400/533MHz
Memory	2 x Micron 512MB DDR-2 533MHZ Dual-Channel technology supported Unbuffered, non-ECC memory supported only
Chipset	Intel® 915GM (Northbridge) and ICH6-M (Southbridge)
BIOS	Phoenix-Award v6.00PG 4Mb PnP flash BIOS
Green Function	Power saving mode includes doze, standby and suspend modes. ACPI version 1.0 and APM version 1.2 compliant
Watchdog Timer	System reset programmable watchdog timer with 1 ~ 255 sec./min. of timeout value
Real Time Clock	Intel® ICH6-M built-in RTC with lithium battery
Serial ATA	Intel® ICH6-M integrates 2 Serial ATA interfaces Up to 150MB/s of transfer rate
Power Requirement	Onboard 4-pin connector DC 5V/12V
Dimension*	185mm (L) x 121 (H) mm
Temperature	Operating within 0 ~ 60oC (32 ~ 140oF) Storage within -20 ~ 85oC (-4 ~ 185oF)

* The width of the nSEAC with the memory added is approximately 1.25 inches (3.2 cm). This means that although nSEAC is inserted into one PCI slot, the amount of space that it consumes internally might prevent the use of a second adjacent PCI slot.

PLEASE NOTE: The purchase of nSEAC cards does not include customization or private-labeling of the software.

Capture

Automatically captures inbound, outbound and internal messages

Writes messages as native RFC822 (Internet mail) files

Records metadata on each message in an Archive Index (database) for user-convenient search and retrieval

Saves message body content in inverted index table

Search and Replay™

User tool to search, list, view and replay archived messages

View messages in the archive before replaying

Users can only view and replay their own messages

Users can reply to or forward archived messages, even when the mail server is unavailable

Supports alias addresses and designated users

Multi-language user interface

Administration

Supports LDAP for simplified user registration and address verification

Administrators are alerted automatically when one of two predetermined storage capacity levels is reached

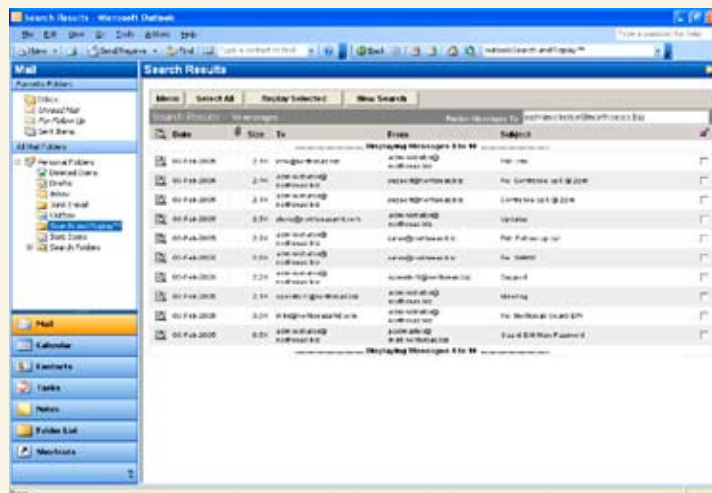
No user modification or deletion of archived messages permitted

Logging and reporting of user and system activities

Remote firmware updates (under warranty or maintenance)

Supports both NFS and CIFS storage options

Login secured using SSL



The NorthSeas Search and Replay™ application (seen above) is accessible using familiar desktop tools like Outlook with client-side code or plug-ins

AustSTOR

AustSTOR Data Storage (ADS) Pty Ltd

1300 134 795 (Toll Free)

www.auststor.com.au

sales@auststor.com.au

www.NorthSeasAMT.com